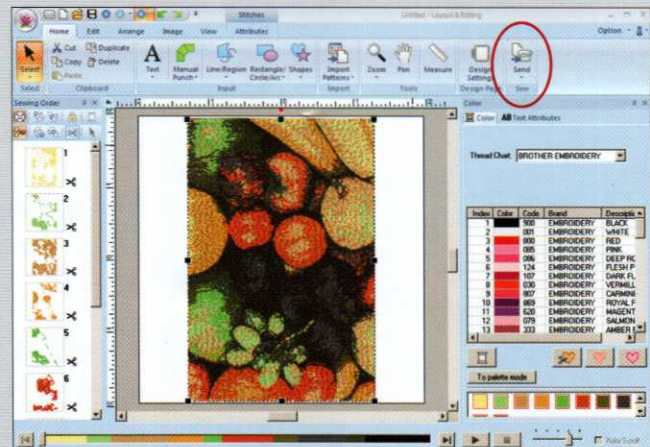
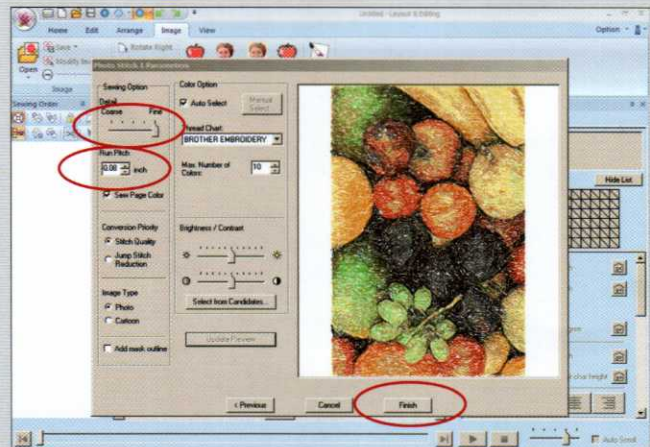


STEP 2 *cont'd*

9. Go to 'Detail' and move it to the right, to 'Fine'.
10. Go to 'Run Pitch' and move it down as low as possible, to .08 in (2.0mm).
11. Click 'Update Preview', then click 'Finish'.
12. Click on 'Send', and select the media you would like to send the image to – either your USB stick, embroidery card, or directly to your embroidery machine. (Only the devices you have connected to your PC will be visible.)



STEP 3

Stitch the design with your embroidery machine.

13. Depending on your 'Send' selection in the previous step – either insert the USB stick or embroidery card containing your design into the machine, or send the design by direct connect to your machine.
14. Select your design, and then stitch the design as you would any other embroidery design.